



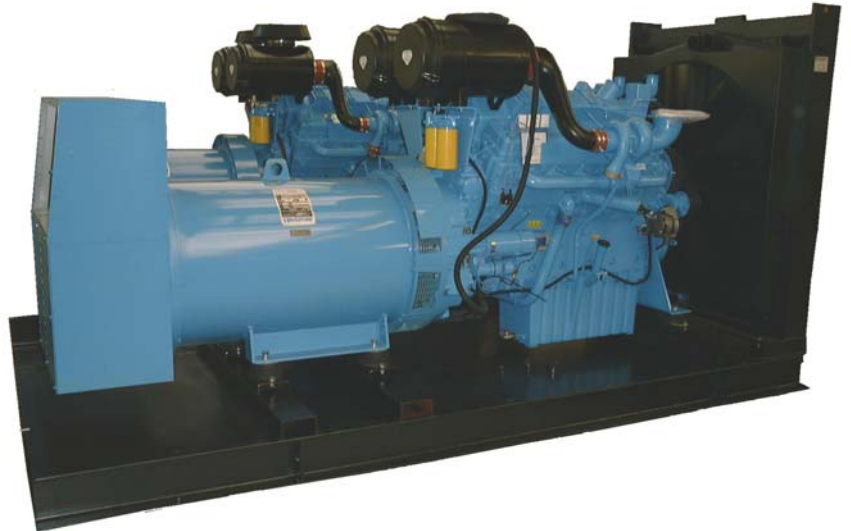
# Arun International

For Reliable Power

## PERKINS POWERED 3 PHASE GENERATING SETS

**All Arun Generating sets are manufactured to International Standards and renowned for their superior performance and reliability.**

**Based on years of experience, these generating sets provide the benefits of low fuel consumption, low maintenance and flexible options.**



### STANDARD GENERATING SET SPECIFICATION

The generating set is supplied complete with the following equipment:

- Modern High Performance 4 stroke diesel engine proven in operation with excellent fuel economy
- Water cooling radiator
- Single bearing three phase alternator of International repute
- Engine and alternator directly coupled and mounted on flexible mountings
- Fabricated steel base frame
- 8 hour full load running capacity fuel tank fitted in the base frame
- Engine starter motor and battery charger
- Heavy duty lead acid starting battery with terminal leads
- Industrial silencer, supplied loose
- Flexible exhaust section, supplied loose
- Manual start control panel fitted with:  
3 x Ammeters, 1 x Voltmeter and Selector switch, Frequency/rpm meter, Hours run meter, Key-start module, Circuit Breaker. Alarms and Shutdown for Low oil pressure, High engine temperature, Over-speed, Fail to start.
- Operators instruction and maintenance manual
- Wiring diagrams



### APPLICATIONS

Perkins generating sets are ideal for the following applications where you can depend on its reliability, easy maintenance and worldwide support:

- Industrial Power –Mains and Standby
- Telecoms and ISP – Electronic Governors are either standard or a low cost option
- Contracting Plant
- Oil and Gas



## GENERATING SET GENERAL TECHNICAL DATA

Arun Model	Engine Type	50 Hz				60 Hz				Length A (mm)	Width B (mm)	Height C (mm)	Weight (Kgs)
		Prime (PRP)		Standby (LTP)		Prime (PRP)		Standby (LTP)					
		kVA	kW	kVA	kW	kVA	kW	kVA	kW				
P0030	1103A-33G	30	24	33	26	35	28	38	31	1570	650	1140	760
P0045	1103A-33TG1	45	36	50	40	53	42	59	47	1700	650	1320	1000
P0060	1103A-33TG2	60	48	66	53	68	54	75	60	1700	650	1230	1050
P0065	1104A-44TG1	65	52	71	57	76	60.8	84	67	1700	650	1230	1050
P0080	1104A-44TG2	80	64	88	70.4	91	73	100	80	2550	1000	1400	1450
P0095	1006TG1A	93	74	103	82	109	87	120	96	1700	620	1230	1050
P0100	1104C-44TAG2	100	80	110	88	112	90	125	100	2550	1000	1400	1450
P0104	1006TG2A	103	82	113	90	121	96	133	106	2550	1000	1400	1450
P0136	1006TAG	136	109	150	120	151	121	166	132	2550	1000	1400	1450
P0150	1006TAG2	150	120	165	132	N/a	N/a	N/a	N/a	2600	1000	1400	1480
P0163	1306 E87TG2	163	130	178	142	N/a	N/a	N/a	N/a	2600	1000	1400	1520
P0180	1106 E66RAG4	180	139	192	154	189	151	207	166	2600	1000	1400	1540
P0189	1306 E87TAG2	189	151	207	166	205	164	223	178	2600	1000	1400	1540
P0208	1306 E87TAG3	208	166	229	183	231	185	253	202	2900	1000	1650	2350
P0227	1306 E87TAG4	228	182	250	200	245	196	270	216	2900	1000	1650	2350
P0235	1306 E87TAG5	235	188	258	206	N/a	N/a	N/a	N/a	2900	1000	1650	2350
P0250	1306 E87TAG6	250	200	275	220	N/a	N/a	N/a	N/a	2900	1000	1650	2400
P0350	2306C-E14TAG2	350	280	400	320	400	320	438	350	3200	1000	1850	2880
P0400	2306C-E14TAG3	400	320	450	360	438	350	500	400	3070	1350	1850	3440
P0450	2506C-15TAG1	450	360	500	400	563	450	625	500	3430	1550	2240	4250
P0500	2506C-15TAG2	500	400	550	440	625	500	688	550	4000	1550	2240	4330
P0550	2806CE18TAG1	550	442	637	510	632	506	700	560	4300	1450	2130	5500
P0635	2806CE18TAG2	635	510	700	560	632	506	700	560	4300	1450	2130	5500
P0675	2806CE18TAG3	-	-	-	-	675	540	750	600	4300	1450	2130	5500
P0730	4006-23TAG2A	730	584	800	640	750	600	844	675	4300	1450	2130	5500
P0800	4006-23TAG3A	800	640	900	720	844	675	938	750	4360	1450	2130	5550
P0850	4008TAG	849	679	935	748	836	669	921	737	4360	1450	2320	7000
P0910	4008TAG1A	905	724	996	797	884	707	975	780	5100	1450	2320	7500
P1000	4008TAG2A	1022	818	1125	900	995	796	1098	878	5100	1450	2320	7800
P1030	4012TWG	1031	825	1136	909	760	608	844	675	5100	1760	2430	10000
P1270	4012-46TWG2	1271	1017	1403	1122	1240	992	1371	1097	5320	1760	2430	10000
P1275	4012-46TAG	1274	1019	1401	1121	1025	820	1128	902	5320	1760	2430	11000
P1350	4012-46TAG1A	1290	1032	1500	1200	1363	1090	1499	1199	5320	1760	2430	11900
P1500	4012-46TAG2A	1505	1204	1656	1325	1505	1204	1656	1325	6350	2500	3375	14500
P1688	4016TWG2	1688	1350	1861	1488	N/a	N/a	N/a	N/a	6350	2500	3375	14500
P1750	4016TAG	1753	1402	1929	1543	1375	1100	1515	1212	6350	2500	3375	14500
P1825	4016TAG1A	1845	1476	2028	1622	N/a	N/a	N/a	N/a	6350	2500	3375	15000
P2000	4016TAG2A	2058	1646	2264	414	1680	1344	1848	1478	6350	2500	3375	15000

All ratings data based upon operation at up to 40°C, 1000m.a.s.l. and 60% relative humidity. Above these, derates may apply.

kVA Ratings based on 0.8 power factor.

**Prime power** – Power available at variable load in lieu of main power network. An overload of 10% is permitted for one hour in every twelve hours of operation.

**Standby Power** – Power available at variable load in the event of a main power network failure. No overload is permitted.

For further information on complete range of mechanical and electrical options please contact our U.K. Sales

Arun International (Power) Ltd  
 Unit F1 Dominion Way, Rustington Trading Estate  
 Rustington,  
 West Sussex BN16 3HQ, United Kingdom  
 Tel: +44 1903 850285  
 Fax: +44 1903 850636  
 Email: sales@arunpower.co.uk  
 Website: www.arunpower.com

Distributed By: